

Fig. 1: *Teleutomymex schneideri* und *Tetramorium caespitum*.

Fig. 1: from Kutter, H. (painting by Linsenmaier, W.), 1951; Du: kulturelle Monatsschrift.

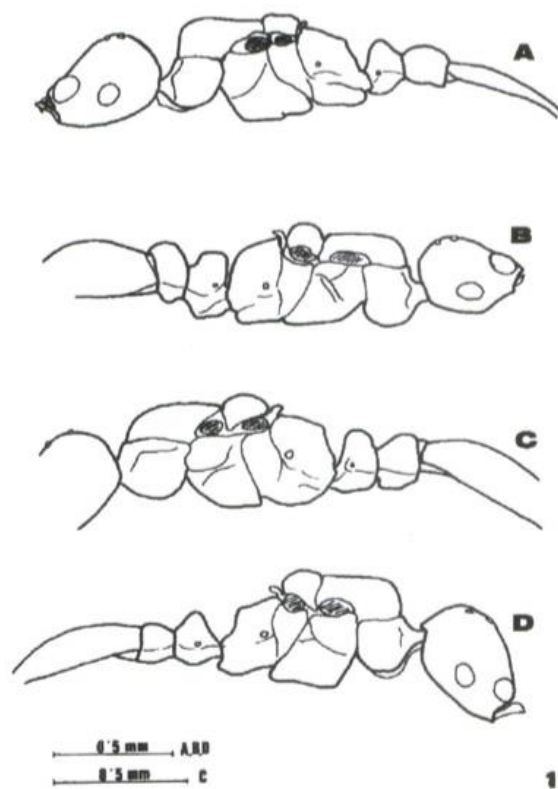


Fig. 1. A., B. Lateral view of the female and male of *T. kutteri*. C., D. lateral view of the male and female of *T. schneideri* from Saas-Fee. (Hairs not drawn).

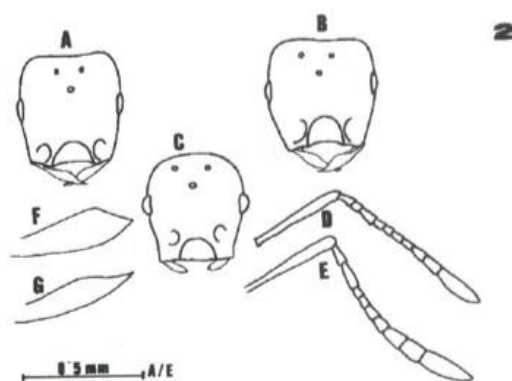


Fig. 2. A. Head of the female of *T. kutteri*; B. Head of the female of *T. schneideri*; C. head of the male of *T. kutteri*; D., E. Antennae of the females of *T. schneideri* and *T. kutteri*, respectively; F., G. mandibles of the males of *T. kutteri* and *T. schneideri*, respectively. (All the specimens of *T. schneideri* from Saas-Fee).

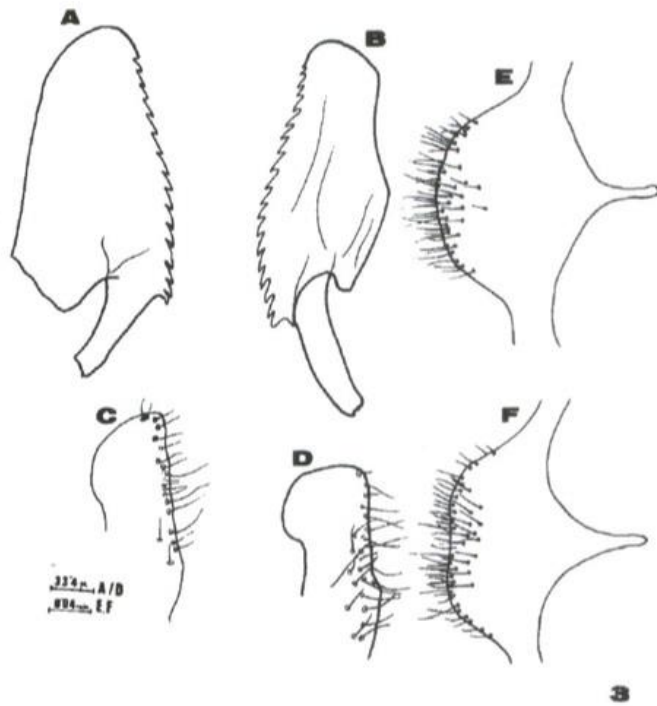


Fig. 3. Sagita, volsella and subgenital plate of *T. kutteri* (B., D., E.) and *T. schneideri* (A., C., F.) from Saas-Fee.

Figs. 1-3: from Tinaut, A., 1990; Spixiana.

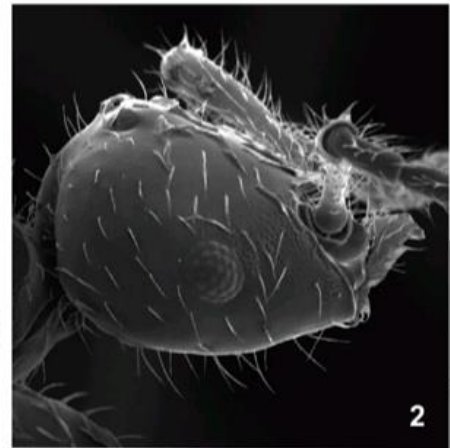
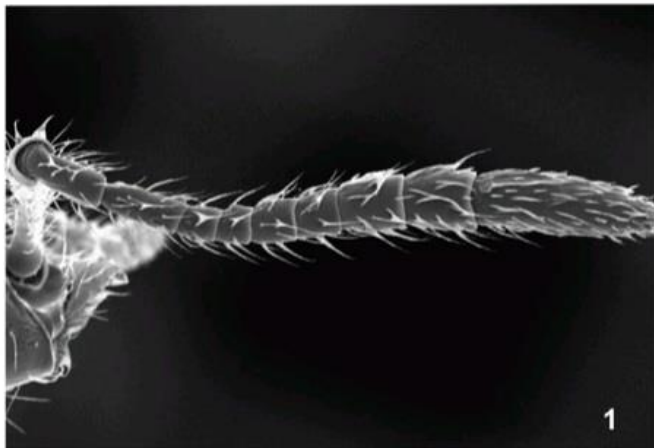


Fig. 1. Detalle de una antena usando el microscopio electrónico de barrido. Detail of an antenna using the scanning electron microscope (SEM). Fig. 2. Vista lateral de la cabeza de *T. kutteri* (SEM). Side view of the head of *T. kutteri* (SEM).

Figs. 1-2: from Reyes López, J., Benavente Martínez, A., 2011; Sociedad Entomológica Aragonesa.

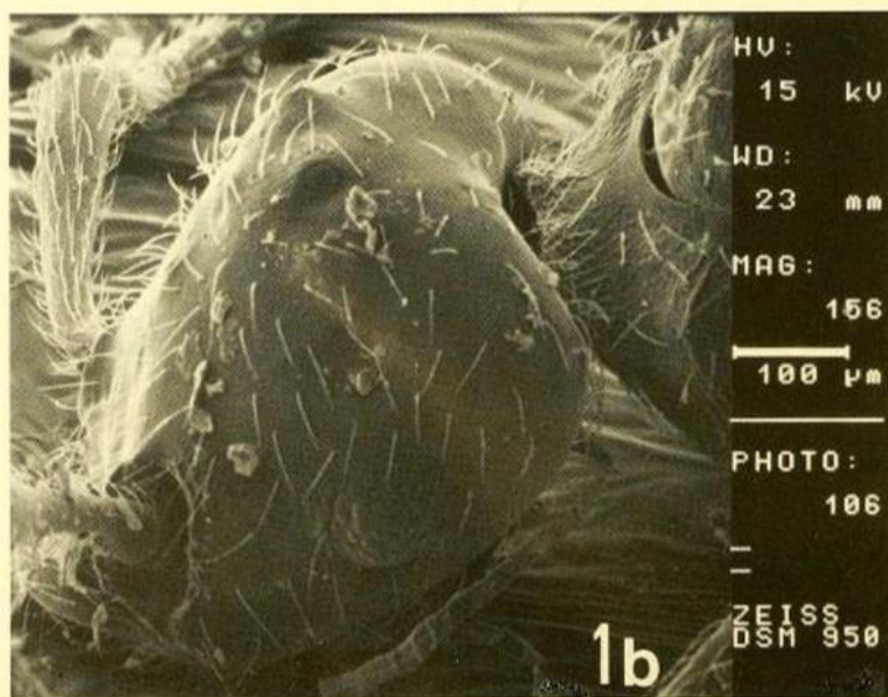
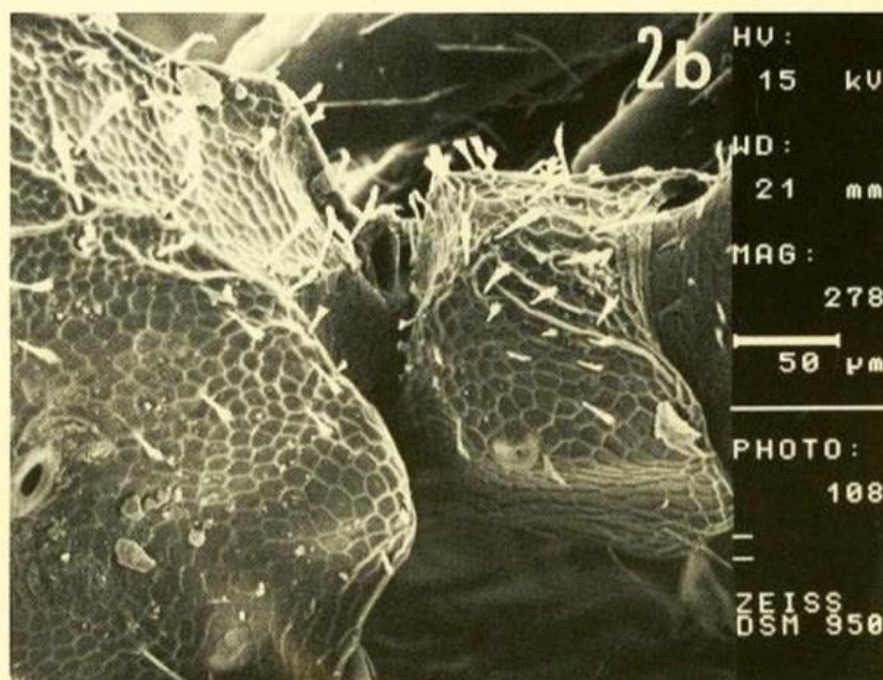
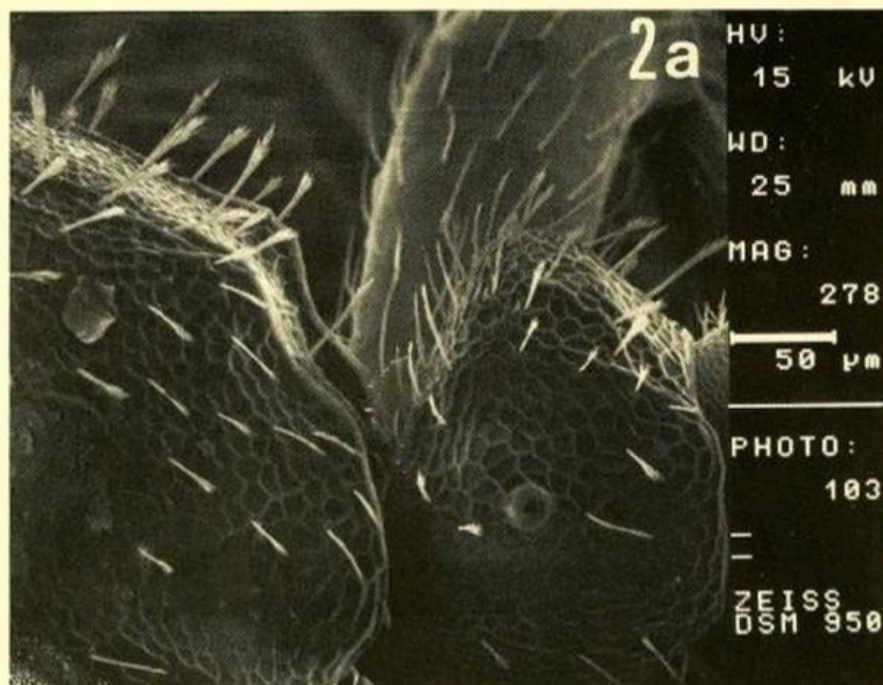


Photo 1. Lateral view of the head of *T. schneideri* from the Pyrenees (a) and of *T. kutteri* (b).



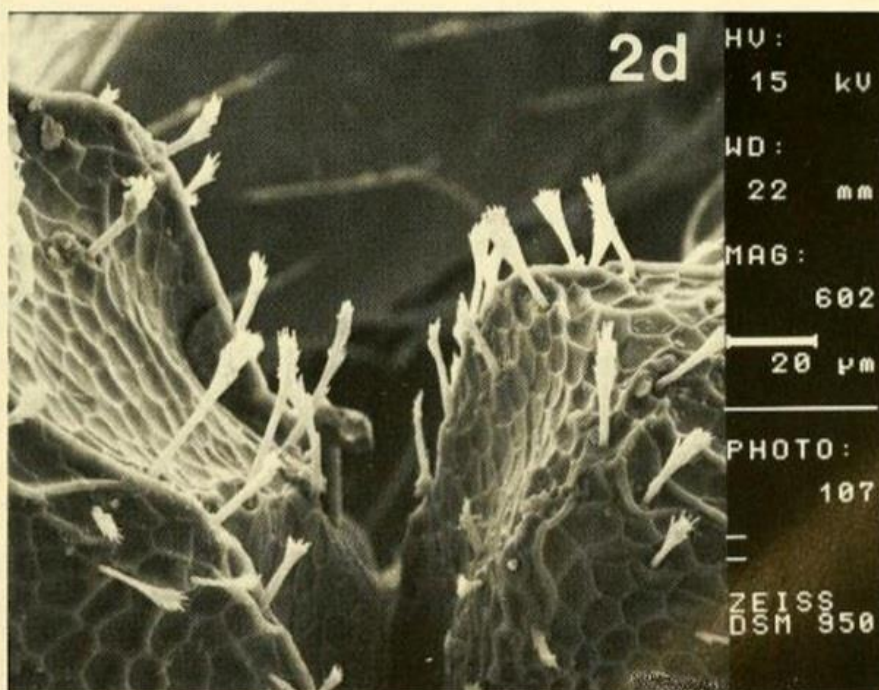
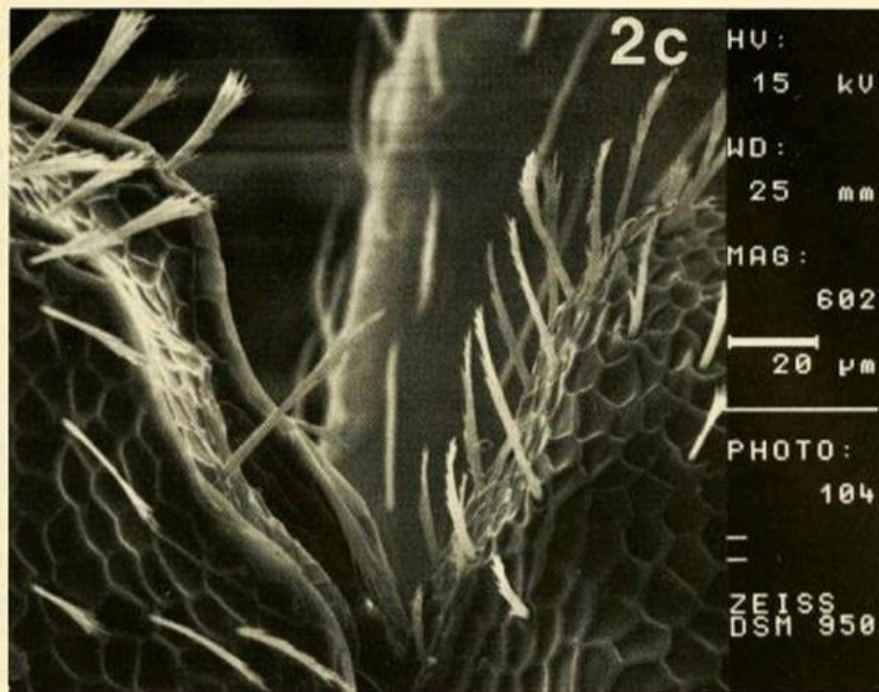


Photo 2. Epinotum and petiole of *T. schneideri* from the Pyrenees (a, c) and *T. kutteri* (b, d).

Photo 1-2: from Tinaut, A., 1990; Spixiana.